



Virginia Healthcare Workforce Briefs

Indicators from the Bureau of Labor Statistics'
Current Employment Statistics Survey
Series 2: Regional & Sectoral Employment

Series 2, Issue 106

January 2021

Inside this Brief:

Regional Employment	2
Regional Employment Growth	3
Subsector Employment	3
Subsector Employment Growth	4
Region Map	5
About the Data	6

Highlights

- ◆ Data in this series are not seasonally adjusted and exhibit short-term volatility from fluctuations in holidays, weekends, weather and other seasonal factors. Estimates for the most recent month are preliminary.
- ◆ Northern Virginia was the only region in the state that increased HC&SA employment during the month. In December, this region created 600 new HC&SA jobs, which translates into a 6.0% annualized growth rate. Meanwhile, the Rest of Virginia saw a decline in HC&SA employment for the first time since August after losing 600 HC&SA jobs in December. Richmond's HC&SA sector also lost 600 jobs in December, while Hampton Roads saw HC&SA employment fall by 400 during the month.
- ◆ Ambulatory Health Care Services experienced its fourth consecutive month of positive employment growth thanks to the addition of 100 new jobs in December. On the other hand, Social Assistance lost 1,000 jobs in December, while Hospitals experienced their second consecutive month of negative employment growth after losing 100 jobs. As for Nursing & Residential Care Facilities, this HC&SA subsector saw no change in employment in December.

Data in this report are not seasonally adjusted. Self-employed persons, including health professionals in private practice, are not included.

Data in Brief

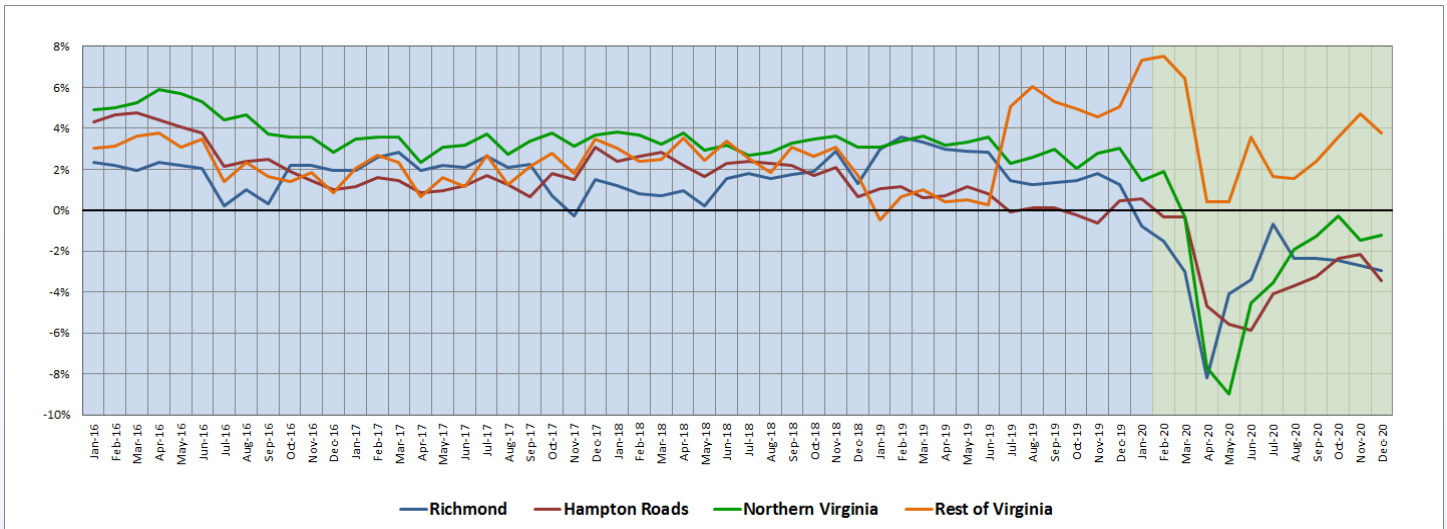
Not Seasonally Adjusted*	Employment, in Thousands				Growth Rate, Annualized		
	Dec. 2019	Sept. 2020	Nov. 2020	Dec. 2020	12 Month	3 Month	1 Month
Virginia							
Total Nonfarm	4,104.3	3,864.2	3,934.6	3,927.2	-4.3%	6.7%	-2.2%
Health Care & Social Assistance	465.0	427.7	434.2	433.2	-6.8%	5.2%	-2.7%
Hampton Roads							
Total Nonfarm	799.2	758.4	771.0	772.1	-3.4%	7.4%	1.7%
Health Care & Social Assistance	96.2	90.2	91.4	91.0	-5.4%	3.6%	-5.1%
Northern Virginia							
Total Nonfarm	1,537.5	1,449.5	1,473.5	1,469.7	-4.4%	5.7%	-3.1%
Health Care & Social Assistance	139.9	122.5	123.9	124.5	-11.0%	6.7%	6.0%
Richmond							
Total Nonfarm	696.2	653.5	664.4	664.4	-4.6%	6.8%	0.0%
Health Care & Social Assistance	87.1	80.6	81.2	80.6	-7.5%	0.0%	-8.5%
Rest of Virginia							
Total Nonfarm	1,071.4	1002.8	1,025.7	1,021.0	-4.7%	7.5%	-5.4%
Health Care & Social Assistance	141.8	134.4	137.7	137.1	-3.3%	8.3%	-5.1%

Preliminary estimates are italicized

*Seasonally adjusted data are adjusted by the Bureau of Labor Statistics to account for weather and other seasonal changes. Since the U.S. Bureau of Labor Statistics does not provide seasonally adjusted data at this level, this series uses **non**-seasonally adjusted data exclusively. Seasonal variation may account for some of the variation in time series data. When comparing data in this series to other HWDC series or other publications it is important to note whether the data reported have been seasonally adjusted.

12-Month Average Employment Growth by Region

Figure 3: 12-Month Moving Average, HC&SA Regional Employment Growth Rate (Not Seasonally Adjusted).



Despite experiencing a decline in December from 4.70% to 3.76%, the Rest of Virginia remains the only region in the state that has a positive 12-month HC&SA employment growth rate moving average. Meanwhile, thanks to its strong job gain in December, Northern Virginia’s HC&SA sector saw its 12-month employment growth rate moving average inch upward from -1.49% to -1.21%. On the other hand, both Richmond and Hampton Roads experienced declines in their respective moving averages. Since reaching a year-to-date high of -0.70% in July, Richmond’s 12-month HC&SA employment growth rate moving average has declined for five consecutive months, falling from -2.68% to -2.94% in December. As for Hampton Roads, its 12-month HC&SA employment growth rate moving average fell from -2.13% to -3.44% during the month.

Subsector Employment Growth

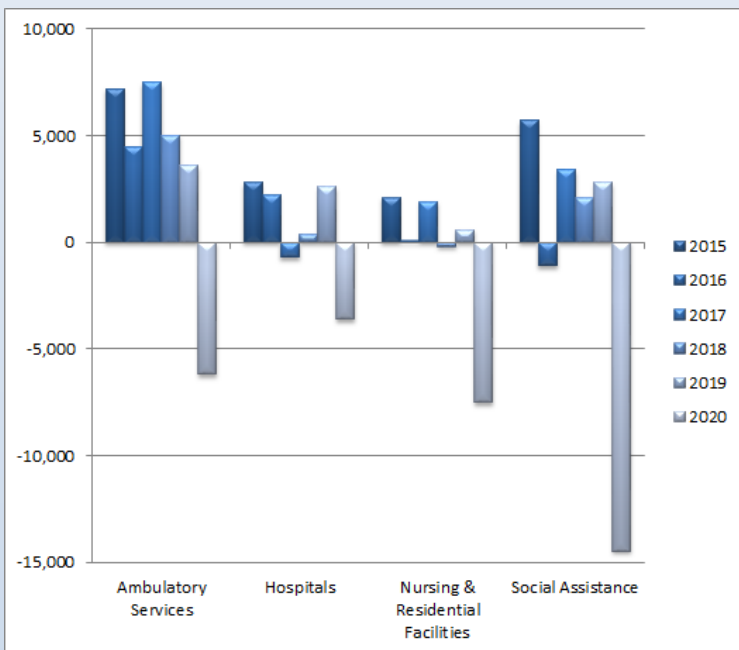


Figure 4: Annual & YTD Change in HC&SA Subsector Employment (Not Seasonally Adjusted, Full-Year Change for 2015-2020).

For the fourth consecutive month, Ambulatory Health Care Services enjoyed positive employment growth. However, December’s employment gain was quite modest with an increase of only 100 jobs during the month. Regardless, this HC&SA subsector has still experienced very strong employment growth over the previous four months. Since September, employment in Ambulatory Health Care Services has increased by 6,400. Although this four-month employment increase helped considerably to improve the long-term job outlook for Ambulatory Health Care Services, this HC&SA subsector still lost 6,200 jobs in 2020.

No other HC&SA subsector increased employment in December. Although Social Assistance experienced the largest decline with 1,000 jobs lost, this HC&SA subsector still enjoyed a strong Q4 2020 with the creation of 1,800 jobs over the past three months. Meanwhile, Hospitals experienced a modest employment decline in December with the loss of 100 jobs. Finally, Nursing & Residential Care Facilities saw no change in employment during the month.

Distribution of Growth by Subsector

Not Seasonally Adjusted	Employment, in Thousands				Growth Rate, Annualized		
	Dec. 2019	Sept. 2020	Nov. 2020	Dec. 2020	12 Month	3 Month	1 Month
Virginia							
Health Care & Social Assistance	465.0	427.7	434.2	433.2	-6.8%	5.2%	-2.7%
<i>Ambulatory Health Care Services</i>	192.3	181.9	186.0	186.1	-3.2%	9.6%	0.6%
<i>Hospitals</i>	108.7	105.8	105.2	105.1	-3.3%	-2.6%	-1.1%
<i>Nursing & Residential Care Facilities</i>	78.6	70.9	71.1	71.1	-9.5%	1.1%	0.0%
<i>Social Assistance</i>	85.4	69.1	71.9	70.9	-17.0%	10.8%	-15.5%
Hampton Roads							
Health Care & Social Assistance	96.2	90.2	91.4	91.0	-5.4%	3.6%	-5.1%
<i>Hospitals</i>	22.5	22.0	21.7	21.7	-3.6%	-5.3%	0.0%
Northern Virginia							
Health Care & Social Assistance	139.9	122.5	123.9	124.5	-11.0%	6.7%	6.0%
<i>Ambulatory Health Care Services</i>	69.0	60.8	61.4	62.1	-10.0%	8.8%	14.6%
<i>Hospitals</i>	26.7	25.6	25.4	25.8	-3.4%	3.2%	20.6%

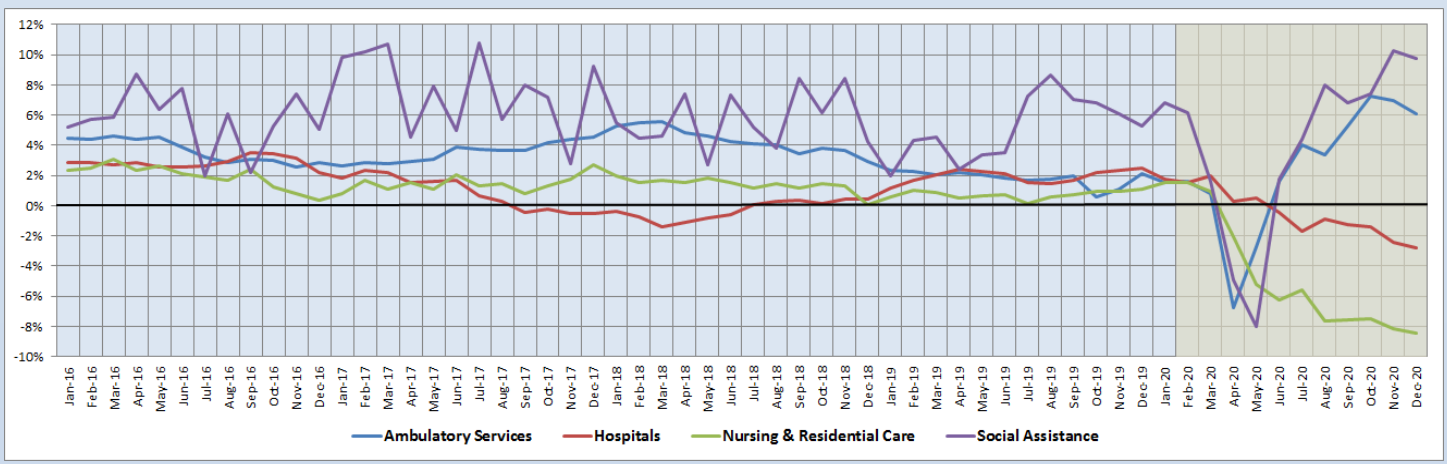
Preliminary estimates are italicized

In Q4 2020, three of Virginia’s four HC&SA subsectors experienced positive employment growth. Social Assistance enjoyed the strongest job growth over these three months as this HC&SA subsector increased employment at a 10.8% annualized rate during the quarter. Ambulatory Health Care Services were not far behind thanks to its strong three-month annualized employment growth rate of 9.6%. Nursing & Residential Care Facilities also experienced positive employment growth in Q4 2020, but its three-month annualized growth rate of 1.1% was well below that of Social Assistance and Ambulatory Health Care Services. As for the entirety of 2020, no HC&SA subsector experienced positive employment growth.

12-Month Average Employment Growth by Subsector

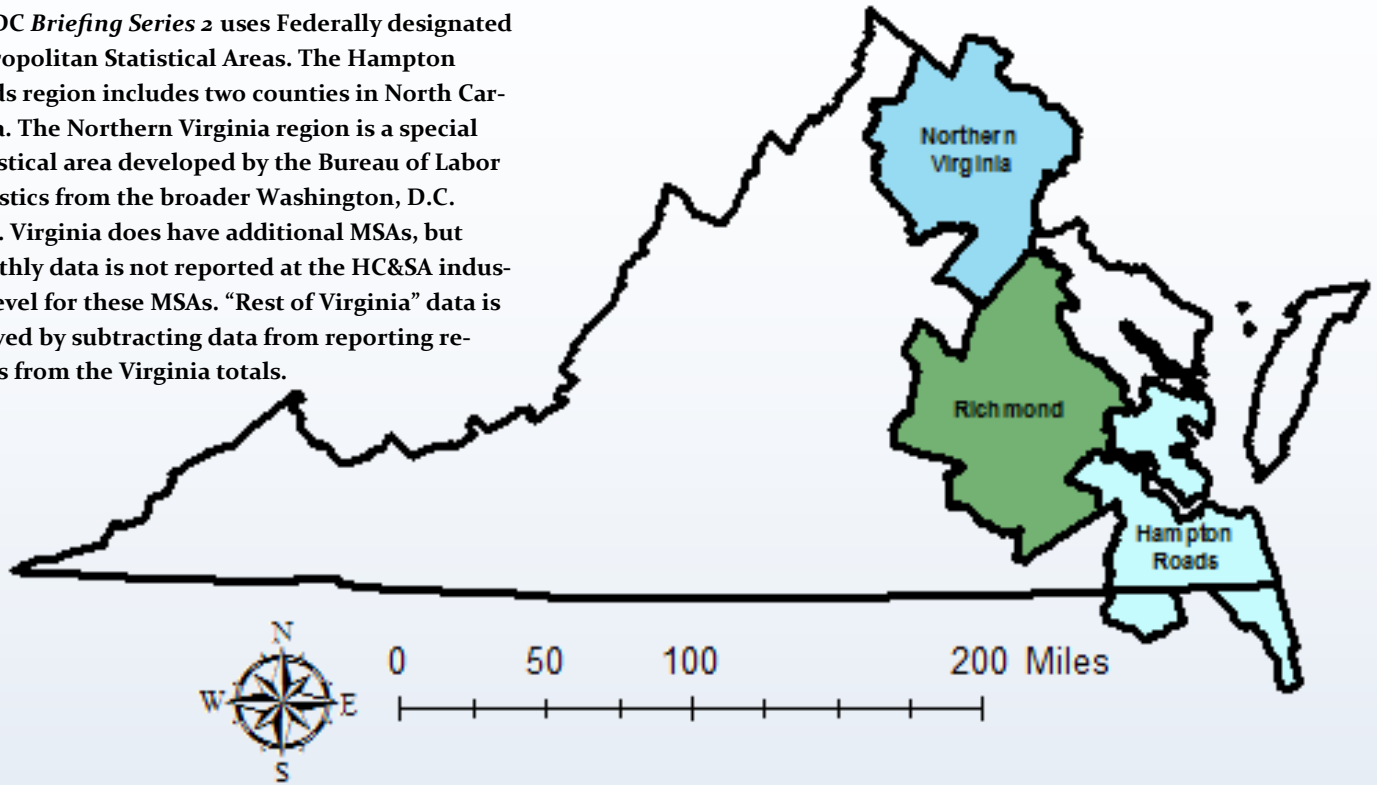
All four HC&SA subsectors experienced declines in their respective 12-month employment growth rate moving averages in December. However, the magnitude of these declines was rather small. Despite falling from 10.24% to 9.73%, the 12-month moving average of the employment growth rate for Social Assistance remains the highest among Virginia’s four HC&SA subsectors. At the same time, the comparable moving average for Ambulatory Health Care Services also remains strong despite falling from 6.94% to 6.12% in December. Meanwhile, Hospitals saw their 12-month employment growth rate moving average fall from -2.43% to -2.81%, and that of Nursing & Residential Care Facilities declined from -8.18% to -8.44%.

Figure 5: 12-Month Moving Average, HC&SA Subsector Employment Growth Rate (Not Seasonally Adjusted).



Region Map

HWDC *Briefing Series 2* uses Federally designated Metropolitan Statistical Areas. The Hampton Roads region includes two counties in North Carolina. The Northern Virginia region is a special statistical area developed by the Bureau of Labor Statistics from the broader Washington, D.C. MSA. Virginia does have additional MSAs, but monthly data is not reported at the HC&SA industry level for these MSAs. “Rest of Virginia” data is derived by subtracting data from reporting regions from the Virginia totals.



Region Detail

Northern Virginia		Richmond		Hampton Roads	
<i>Northern VA, (Non-standard CES Area 94783)</i>		<i>Richmond, VA (MSA 40060)</i>		<i>Virginia Beach-Norfolk-Newport News, VA-NC (MSA 47260)</i>	
Counties:	Cities:	Counties:	Cities:	Counties:	Cities:
Arlington	Alexandria	Amelia	Colonial Heights	Gloucester	Chesapeake
Clarke	Fairfax	Caroline	Hopewell	Isle of Wight	Hampton
Culpeper	Falls Church	Charles City	Petersburg	James City	Newport News
Fairfax	Fredericksburg	Chesterfield	Richmond	Mathews	Norfolk
Fauquier	Manassas	Dinwiddie		Surry	Poquoson
Loudoun	Manassas Park	Goochland		York	Portsmouth
Prince William		Hanover			Suffolk
Rappahannock		Henrico		<i>Currituck, NC</i>	Virginia Beach
Spotsylvania		King William		<i>Gates, NC</i>	Williamsburg
Stafford		New Kent			
Warren		Powhatan			
		Prince George			
		Sussex			

Healthcare Workforce
Data Center

Perimeter Center
9960 Mayland Drive, Suite 300
Henrico, VA 23233-1463

Phone: (804) 597-4213
Fax: (804) 527-4434
E-mail: hwdc@dhp.virginia.gov
Website: www.dhp.virginia.gov/PublicResources/HealthcareWorkforceDataCenter/

HWDC Staff:

Elizabeth Carter, PhD <i>Executive Director</i>	Yetty Shobo, PhD <i>Deputy Director</i>
Laura Jackson, MSHSA <i>Operations Manager</i>	Rajana Siva, MBA <i>Data Analyst</i>
Christopher Coyle <i>Research Assistant</i>	

The Department of Health Professions Healthcare Workforce Data Center works to improve the data collection and measurement of Virginia's healthcare workforce through regular assessment of workforce supply and demand issues among the 80 professions and 350,000 practitioners licensed in Virginia by DHP.

The HWDC collects data on Virginia's licensed health professionals through surveys completed during the online license renewal and application process. Survey results and data may be accessed on our website: www.dhp.virginia.gov/PublicResources/HealthcareWorkforceDataCenter/.

The HWDC also provides a series of Virginia Healthcare Workforce Briefs based data collected by the U.S. Department of Labor's Bureau of Labor Statistics and the U.S. Department of Commerce' Bureau of Economic Analysis.

Virginia Healthcare Workforce Briefs:

Series 1: State & National Employment (Monthly)

Series 2: Virginia Regional Employment (Monthly)

Series 3: Income & Compensation (Quarterly)

Follow us on. . .

Tumblr: <http://vahwdc.tumblr.com/>

About the Data

Data in this report are from the U.S. Department of Labor Bureau of Labor Statistics' Current Employment Statistics program. The CES program surveys about 143,000 businesses and government agencies monthly. Unless otherwise noted, this series uses data that are not seasonally adjusted. Seasonal variations related to weather, holidays, weekends, seasons and other predictable variations are apparent in the data. Short-term changes may be related to seasonal changes rather than underlying trends. Data from recent months is preliminary and subject to revision in future releases from the CES. Revisions will be reported in future editions of this series. Unless otherwise noted, the CES data presented in this series:

Includes:

- ◆ Data on employed individuals drawing a paycheck (payroll employees).
- ◆ All employees, regardless of role, occupation or hours worked.
- ◆ HC&SA employees in the private sector only.
- ◆ Persons employed by health professionals in private practice.
- ◆ Both government and private sector workers in nonfarm employment data.

Does not include:

- ◆ Self-employed workers or volunteers, including health professionals in private practice.
- ◆ HC&SA employees in the public sector. (These are counted as government workers in monthly reports).
- ◆ Information on hours worked or the quality of employment.
- ◆ Government workers in HC&SA level data. (Government workers, regardless of occupation and role, are classified as public sector employees).